



Engineering Specification Sheet
Side Mount Disconnect Combiner Box

GENERAL INFORMATION

- **Description:** Fused string combiner box with 200, 250, or 400A load break disconnect switch with side mounted handle. 200, 250, or 400A at 1000VDC maximum output.

Dimensions:

- NEMA 4X Fiberglass (Standard):
- NEMA 4 Steel (Optional):
- NEMA 4X Stainless Steel (Optional)

Part number

PR-X*-Y*-FG
 PR-X*-Y*-S
 PR-X*-Y*-SS

X* = Configured Number of Strings
 Y* = 200, 250, or 400A Disconnect

**Enclosure sizes will vary depending on configured string count and disconnect amperage.

- **Fuse holders:** X* finger safe, non-load break fuse holders. 30A, 1000VDC rated.

TECHNICAL SPECIFICATIONS

- **Disconnect Switch:** 1000 VDC, 200A, 250A, or 400A load break, rated for continuous duty class DC-21 (UL98B).
- **Input Wires:** Fuses: X* total, 8-14AWG, 90°C, Cu Wire
- **Output Wires:** Fused, Non-Fused: 1 ea., 350MCM-6AWG, 90°C, Cu/Al Wire
 *Dual Outputs to 600MCM, 90°C, Cu/Al Wire (Optional)
- **Ground Terminals:** 1 ea., 350MCM-6AWG, 90°C, Cu/Al Wire
 Ground Tap Bar, 4-14AWG, 90°C, Cu/Al Wire
- **Operating Temperature, Humidity:** -10°C to +60°C (15°F to 130°F), 0-100% Humidity
- **Busbars:** C11000 Alloy (Copper), electroplated to prevent corrosion. Rated continuous duty.

FEATURES

- **Labeling:** All components, wire ranges, & torque values labeled onto back pan.
- **Mounting panel:** Alodined finished aluminum back pan standard. Optional: White Powder Coated Steel
- **Insulators:** All busbars are supported by 1000VDC rated insulators for added rigidity.

OPTIONS

- **Surge Protection:** Pre-wired 1000VDC rated transient surge suppressor.
- **Pigtails:** Pre-Wired POS and NEG pigtails with female and male H4 Connectors terminated thru HEYCO cord grips.
- **Monitoring:** String current monitors capable of monitoring up to 24 strings at +/- 1% accuracy. 2 Wire, Modbus RTU output.
- **Output Lugs:** Large single or dual mechanical output lugs up to 600MCM AL/Cu available. Optional provisions for 1-Hole or Nema 2-Hole 600MCM AL/Cu Compression type lugs also available.

APPROVALS

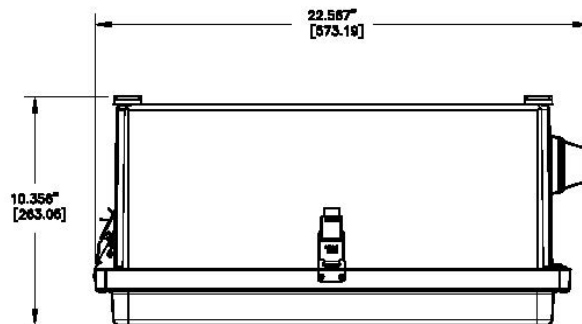
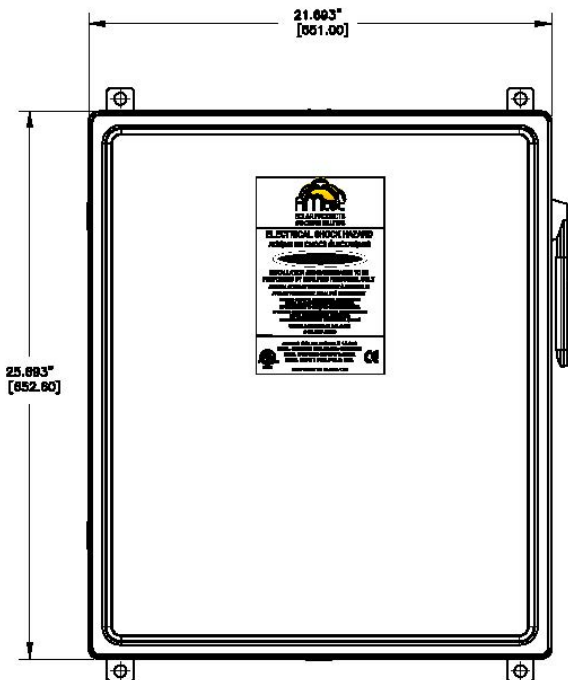
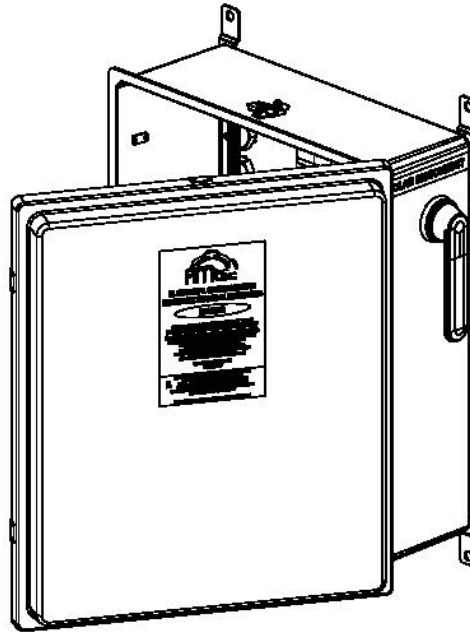
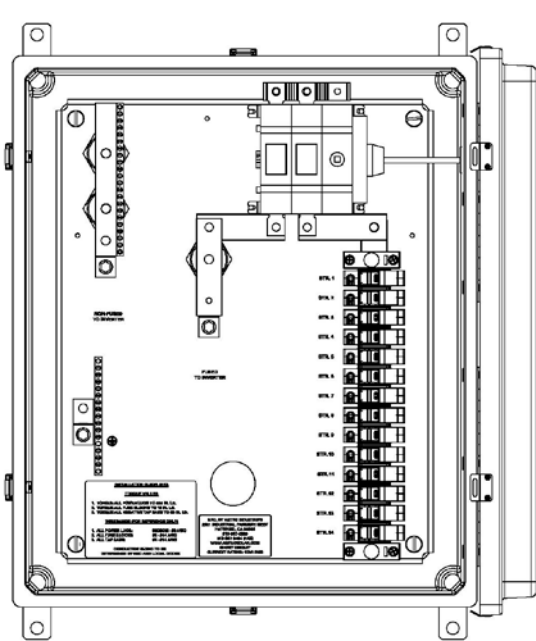
- Listed to UL1741, CAN/CSA C22.2 Listed @ 1000Volts, CE Listed @ 1000Volts.



AMtec Solar
 7079 Commerce Circle, Pleasanton CA 94588

www.amtecsolar.com

510.887.2289



- Representative of typical layout with a 200A 1000VDC disconnect switch-
- Shown with standard fiberglass enclosure and optional customized backpan w/2" KO-
- Layout and enclosure size will vary depending on string count and disconnect size configuration-